

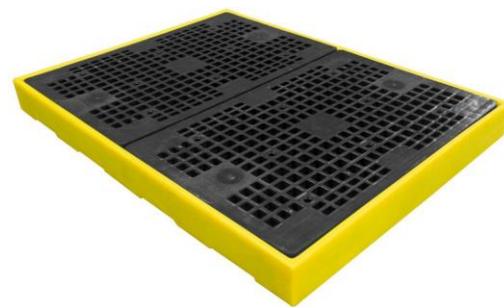
Technical Data Sheet | BF4

Sump Floor | 4 x Drums or Small Containers

A low-profile 4-drum sump floor is only 150mm high moulded from medium-density polyethylene that can be used as a stand-alone unit or combined with others to create unlimited bunded areas. Units can be joined together with plastic connectors to inter-link the sumps and the injection moulded mesh floor.

Product Specifications

| | |
|-----------------------------|---------------------|
| External Dimensions (WxLxH) | 1260 x 1675 x 150mm |
| Unit Weight | Approx. 38kg |
| Sump Capacity | 300ltr |
| UDL | 2000kg |
| UK Pack Size | 13 |
| Export Pack Size | 15 |



Product Features and Benefits

- Can be combined to create larger work areas
- Low-profile for easy loading and unloading
- Broad range chemical compatibility
- 2 x removable grid for easy cleaning
- UV stabilised
- Backed by our 3 year guarantee
- DIBt approved